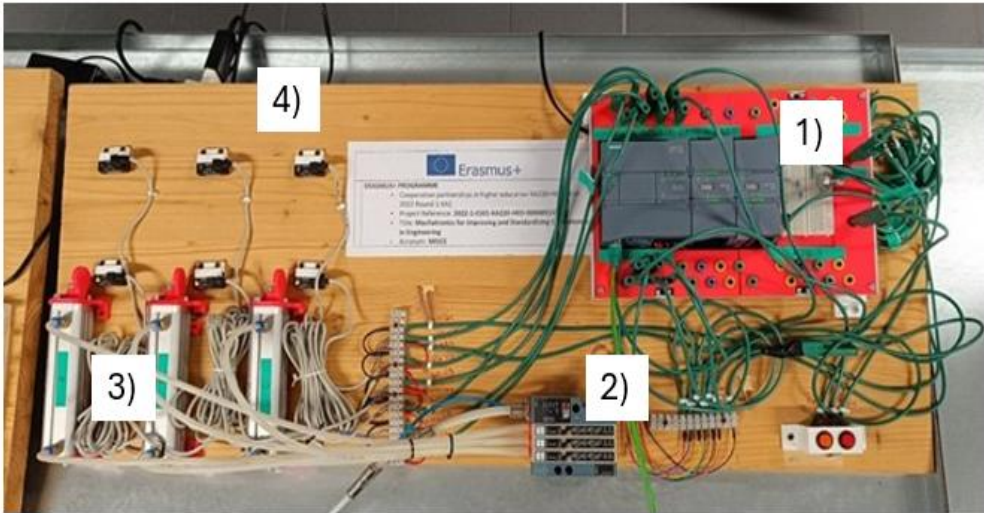
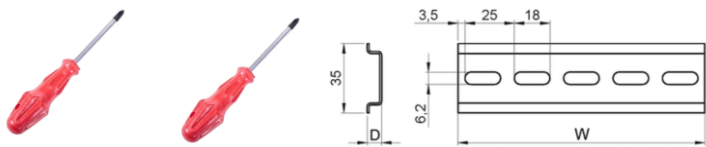


List of Parts



- 1. n.1 Siemens PLC of type 1215C;
- 2. n.6 3/2 electrically operated monostable valves for each cylinder (3/2 single-valve valves with electric drive (2 for each cylinder);
- 3. n.3 Double-acting pneumatic cylinders (A, B, C);
- 4. n.6 magnetic proximity sensors mounted on cylinders (2 for each cylinder: a0/a1, b0/b1, c0/c1).

List of Tools



- 1. n.2 Screw driver, Philips and FlatHead;
- 2. n.32 Screw
- 3. n.3 Din 35mm guide (W=25 cm)

Procedure

- 1. Step 1: Screw the 3D printed parts (Fig 1) in their desidered position onto the board;
- 2. Step 2: Screw all the parts in their desidered position onto the board;
- 3. Step 3: Connect the pneumatic valves following Fig. 2;

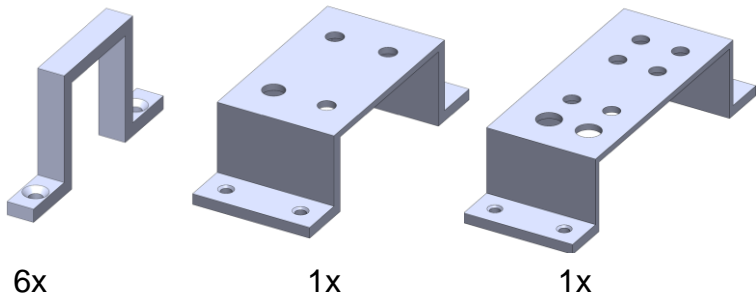


Fig 1

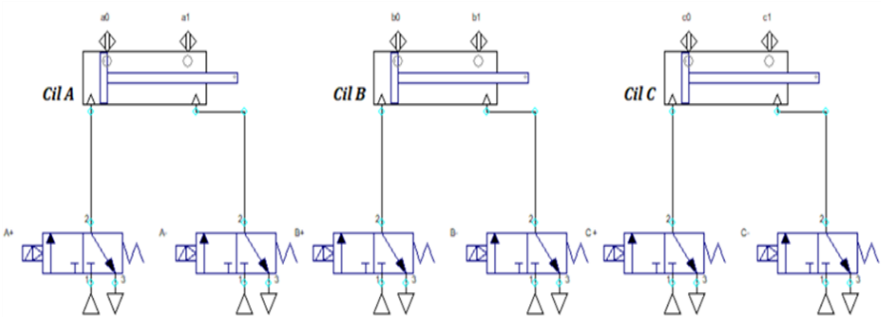


Fig 2

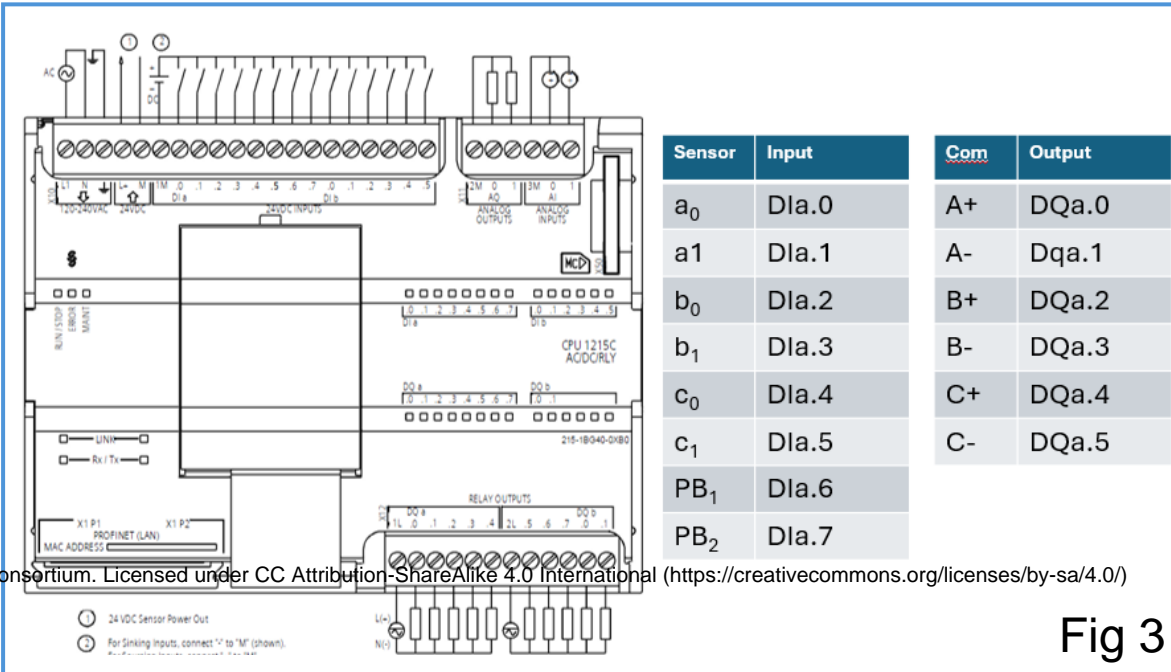


Fig 3